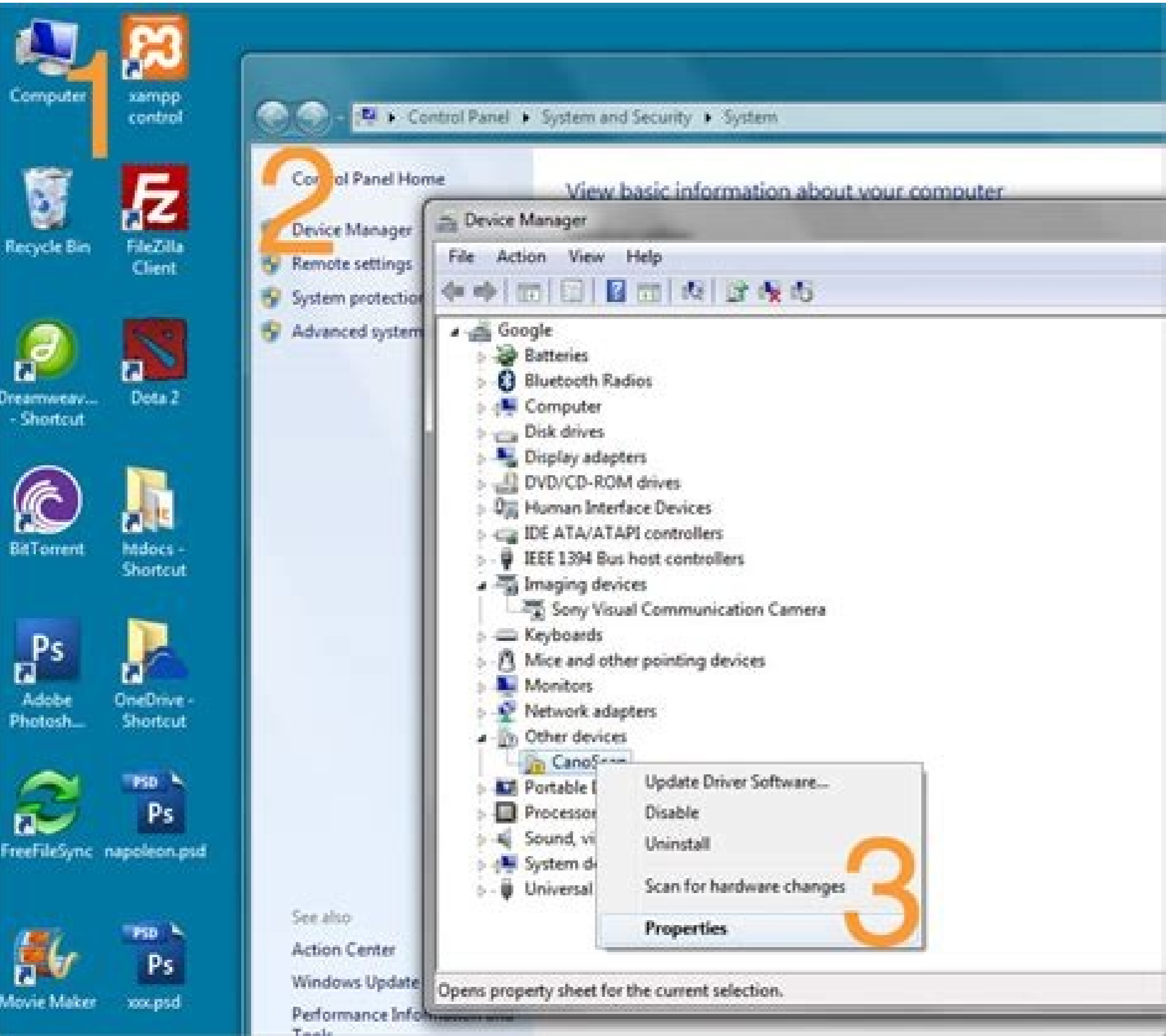
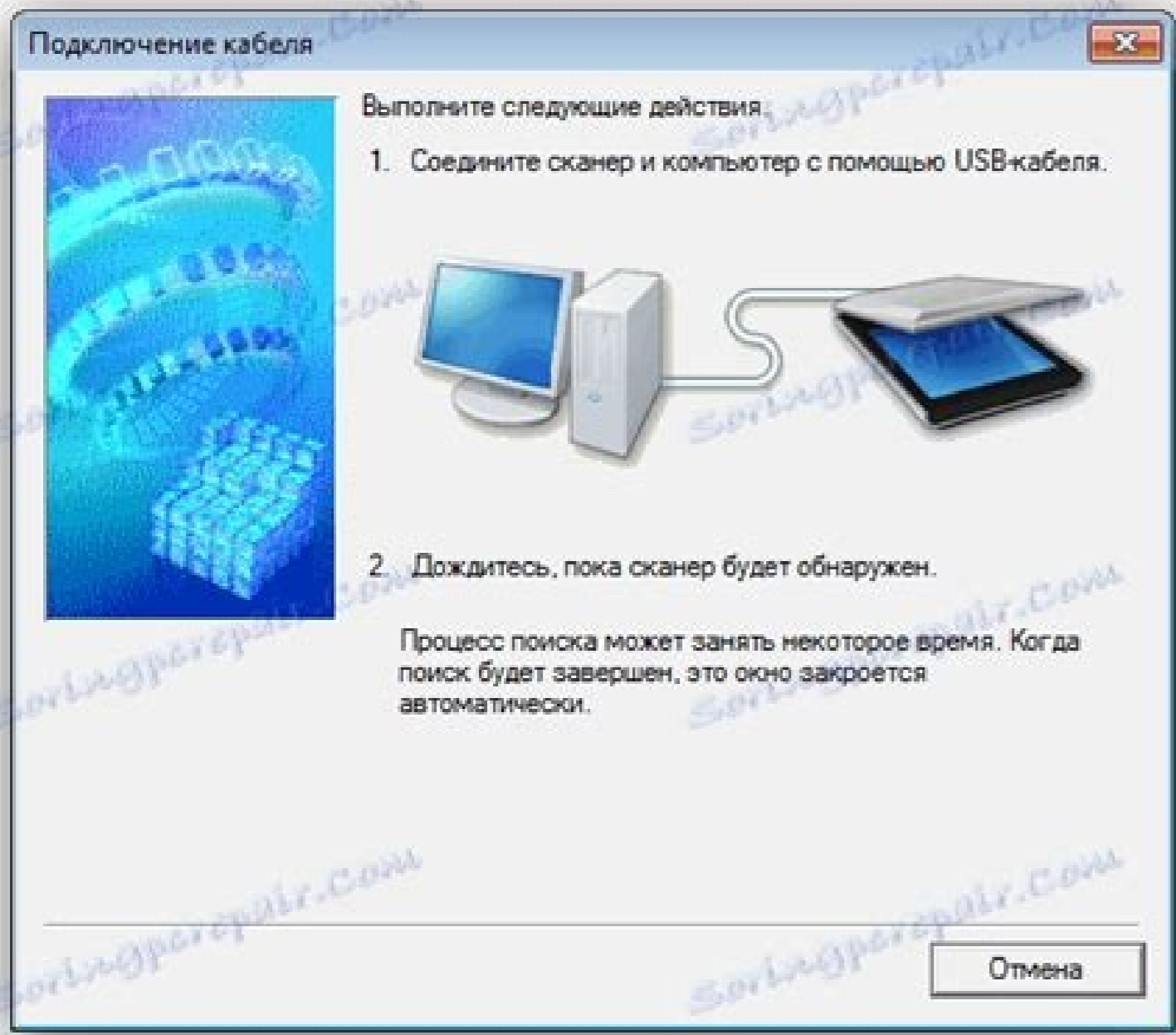


I'm not robot!





Canon lide 300 not working. Canon lide 110 scanner software for windows 8.1 64 bit. Canon lide 110 software windows 8. Canon lide 110 not working with windows 10. Canon lide 120 not working windows 10. Is canon lide 110 compatible with windows 10.

Marc Bodewes In Jan 2003 I bought VueScan for my Epson Perfection 1200. I used it a lot, more functions than the standard driver. Got new computers with new operating systems, forgot about VueScan. I got a new Epson scanner - old one doesn't have Win10 drivers. I remembered VueScan. Found it, downloaded the trial version, and my old EPSON 1200 scanner WORKED again. Wow, a purchase made in 2003, works on a PC with an operating system that doesn't exist in 2003, 17 YEARS later! And that for a very small amount of money. THIS IS SERVICE AND ADDING VALUE TO YOUR CUSTOMER! Device Name: Canon LIDE 110 Device Type: Scanner Manufacturer: Canon Hardware ID: CanoScan LIDE110 Version # Date Driver Name & Download Compatible OS 17.0.5.29 05/03/2016 Canon CanoScan LIDE 110 Scanner Driver From Canon. Click to Download User Driver Support. Give Driver Support | ONE a try today! Windows 10, 8, 7 Release Notes: LIDE 110 Scanner Driver Ver. 17.0.5 (Windows) Download: 0100029201 Release date: 13 April 2016 This file is a TWAIN-compliant scanner driver for Canon color image scanner. Procedure - If the OS is upgraded with the scanner driver remains installed, scanning by the product may not be performed after the upgrade. In such cases, re-install the scanner driver. Compatibility Operating system(s) Windows 10 (32-bit) Windows 10 (64-bit) Windows 8.1 (32-bit) Windows 8.1 (64-bit) Windows 8 (32-bit) Windows 8 (64-bit) Windows 7 (32-bit) Windows 7 (64-bit) Windows Vista (32-bit) Windows Vista (64-bit) Windows XP (32-bit) Ver. 17.0.5) - The scan error in the certain PC has been rectified. Ver. 17.0.4) - Windows 10 has been added as a supported OS. - Windows 8.1 has been added as a supported OS. (Ver. 17.0.3) - The problem that calibration is sometimes unsuccessful has been rectified. (Ver. 17.0.2) - The stability of the scanner driver has been improved. Software File version: 17.0.5 File Size: 9.2 MB File name: s6f6-wm-lide110-17.0.5-a24.exe Applicable Models: CanoScan LIDE 110 Installation Instructions: Download / Installation Procedures 1. Click the link, select [Save], specify "Save As", then click [Save] to download the file. Menu: If you select [Run] or [Open] instead of [Save], the file will be automatically installed after it is saved. 2. The downloaded file will be saved in the specified place in the self-extracting form (.exe format). 3. Double-click the downloaded EXE file to decompress it, then installation will start automatically. Uninstall Procedures: If needed, you can uninstall this program using the Control Panel. Note - The steps below are for Windows 7. This procedure may be different for other (See: 1. On the Start menu, click Control Panel, and then, under Programs click Uninstall a Program. 2. A page will open with a list of installed programs. Double-click on the program that you want to uninstall. 3. Click "Yes" then "OK", this will complete the uninstallation process. Driver Update Requirements: When you open and unpack your Canon CanoScan LIDE 110 Scanner, it should work simply by plugging it into an empty USB slot. Sometimes, your scanner can experience issues communicating with your devices, if so, there is a good chance that you will need to update your driver. Downloading and installing a scanner driver can be time consuming. To avoid time and frustration associated with driver updates, you can use a driver update tool to get your driver automatically updated in minutes with DriverSupport. Before you proceed to download the Canon CanoScan LIDE 110 Scanner driver, make sure that your PC meets the system requirements. Supported Operating Systems: Windows 8 (32 and 64bit) Windows Vista (32 and 64bit) Windows XP (32bit) Mac OS X 10.4.11 - 10.8 Depth (Externally): 48 bit color Interpolated Resolution: 19200 dpi x 14000 dpi Scan Element Type: Contact Image Sensor (CIS) Lamp / Light Source Type: RGB LED array Scan Speed: 16 sec / page Control Panel Buttons Functions: Copy, email, Scan to PDF Powered by USB port, Advanced Z lid, Auto Document Feeder Max Document Size: 8.5 in x 11.7 in Supported Document Type: Plain paper, bulk objects (such as books, magazines and other bound materials), business card Document Feeder Type: Manual Interfaces: USB 2.0 Type B ENERGY STAR Certified Yes Power Consumption Operational (Standby): 2.5 Watt (1.4 Watt) Software / System Requirements Software Included: Drivers & utilities, Canon Solution Menu, MP Navigator EX OS Required, Microsoft Windows 2000, Microsoft Windows XP, Microsoft Windows 7, Microsoft Windows Vista, Apple MacOS X 10.4.11 - 10.6 9.8 in W, 14.6 in D, 1.6 in H Min Operating Temperature: 41 °F Max Operating Temperature: 95 °F Humidity Range Operating: 10 - 90% Canon LIDE 110 Specification Details Description Product Details The Canon LIDE 110 is a popular dedicated USB scanner that is both cost-effective and quick. The printer's USB interface provides for seamless scan and image transfer straight to your computer. Plus, you can receive quick image previews of your documents and photos before full scanning takes place. This stylish scanner also features an ultra-compact, sleek design making it a welcome addition to any home. The integrated lid is designed to ensure all document types - such as books - can be easily scanned, without compromising the optimal aesthetics. The Canon LIDE 110 is a flatbed scanner that provides a high-speed letter size color scanning within 18 seconds. The Auto Scan Mode adjusts settings by detecting what is being scanned. This scanner is compatible with the following Windows OS: Windows 8, Windows 7, Windows Vista, Windows XP and Mac OS X v10.4.11 to v10.6) The Scanner Ease of Use: EZ Buttons (Copy, Auto Scan, PDF) and Email, Auto Scan Mode, Auto Document Feeder, One Page Scanning The CanoScan LIDE110 Color Image Scanner comes with the following right of the box, Canon LIDE 110 Scanner Document Kit Includes: Cross Salt Sheet Quick Start & Spec. Sheet Safety Precautions Setup Software, User Guide CD-ROM Warranty Card, USB Cable Brand Canon Type Flatbed Resolution: 2400 dpi Color depth: 48-bit Color Interface Type: USB 2.0 Max Supported Document Size: 8.5 in x 11.7 in Grayscale Color Depth: Color Depth Scan Element Type: Contact Image Sensor (CIS) Light Source Type: RGB LED array Scan Speed: 16 sec / page Control Panel Buttons Functions Max Document Size: 8.5 in x 11.7 in Document Feeder Type: Manual Environmental Standards Width 9.8 in Depth 14.6 in Height 1.6 in Weight 3.33 lb The Manufacturer Warranty: 1 Year Limited Driver Support: Бесплатное обновление драйверов, 1 год бесплатной технической поддержки. Canon LIDE 110 Scanner Driver is compatible with Windows 10, 8.1, and 8 and is also available for Mac OS X and Linux systems. This compact color image flatbed scanner has a high-quality optical resolution of 2400 dpi. The speed of this device is 9 pages per minute. The Canon LIDE 110 Driver is available for all three operating systems. There are some common errors you can encounter with the printer, but the driver is usually easy to fix. Before the installation: Before installing the Canon LIDE 110 driver, you should check the compatibility of your operating system. If your system is compatible with Windows, then you should download the latest driver. If you're using a Mac, you should install the driver for Windows. Then, insert the CD into your optical drive. If an AutoPlay or User Account Control dialog box appears, select the appropriate option. After installing the driver, you can now set up your Canon LIDE 110 scanner. Setting up a Canon LIDE 110 scanner: you must first download and install the driver on your computer. Once you have installed the driver, you can start the setup process. You will need to insert the CD into your computer's optical drive. Once the AutoPlay dialog box appears, click the "Run" button to launch the software. If the Windows User Account Control dialog box appears, select "No" to accept the installation. Install the Canon LIDE 110 Scanner Driver: After installing the driver, you should install the printer. Once you have finished the setup process, you can start using your Canon LIDE 110 scanner. Once you've installed the driver, you can now set up your scanner. To install the printer, you should insert the CD into the optical drive. After this, a User Account Control dialog box will appear. After you've installed the driver, you should click "OK" to confirm the installation. The driver is an important part of your computer. It will allow you to set up the Canon LIDE 110 scanner. To install the driver, you need to insert the CD into the optical drive. If a pop-up window appears, select the option to run the software. After a User Account Control dialog box appears, click "Run" to install the driver. The installation process will continue after the CD has been removed from the optical drive.

